



GENERAL

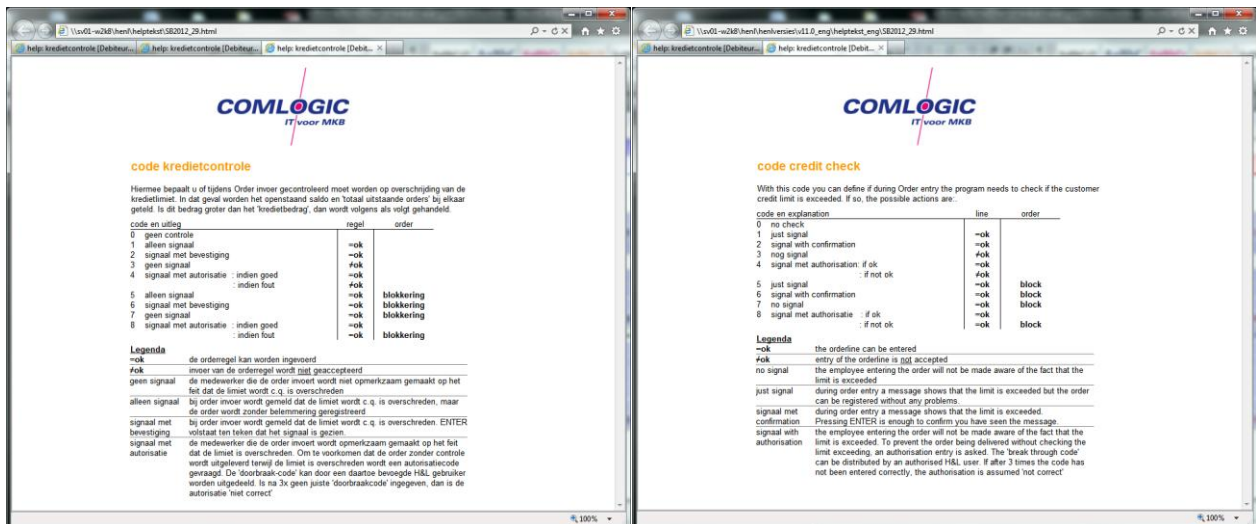
Translations

Although H&L has been available in Dutch and translated in English for many years, some texts were not translated in English yet. In this version we have translated those texts in English now.

Hoofdbesturing	
Financieel	01
Artikelen & Voorraad	02
Inkoop	03
Verkoop	04
Expeditie	05
Statistieken & Quality	06
Contracten & Service	07
EDI	08
Systeembeheer	09
Comlogic beheer & Diversen	10

Main processing	
Financial	01
Items & Stock	02
Purchase & Quality	03
Sales	04
Shipment administration	05
Statistics & Quality	06
Contracts & Service	07
EDI	08
System management	09
Comlogic manage- & Development	10

The help texts are also translated. For all customers who use the English version, help text was always available in so called H&L help text windows. Since version 7.3 the Dutch version was also provided with the ability show help texts in html format which really improved the readability. Now, all html help texts are also available in the English version.

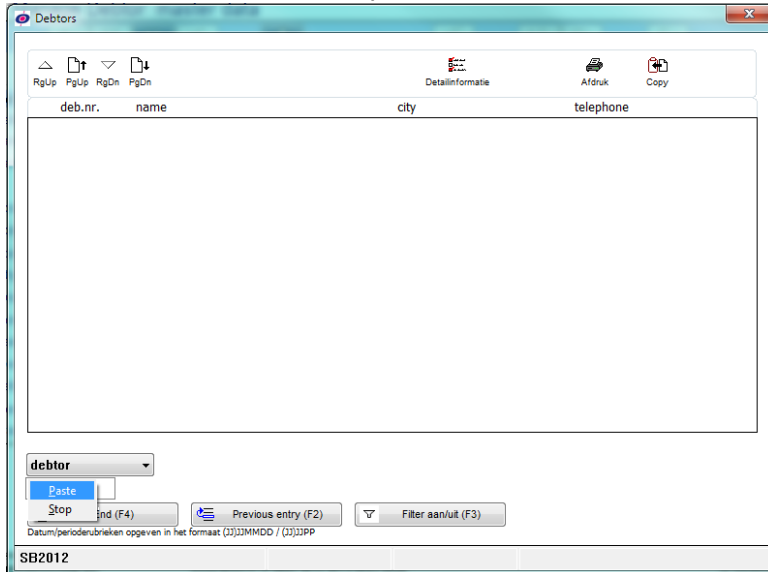


'Paste' in information windows (and in the menu)

Many times you are looking for a record using a certain number or a code. This could be a customer number, a product number or for instance an order number. In many information windows you can search for records using these criteria. If you had a certain number in the 'clipboard' of your computer though and you wanted to paste this value (using Cntrl-V or using your right mouse key) in the search entry in an information window, this was not allowed. 'Not allowed' actually isn't the correct term because the software did not provide a paste-function in that specific entry.



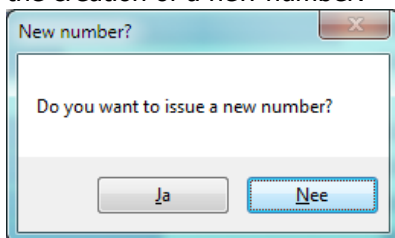
In this version we added this option. To illustrate here's an example:



By clicking on the right mouse key in this entry a popup window appears (in stead of the right mouse key you can also choose to use the key combination Ctrl-V) Because of these changes the H&L menu also provides in this paste-function!

Number generator

In a number of programs (among which 'Order entry' and 'Book Purchase invoices') H&L can automatically create a new number (using ENTER). Since the use of the mouse in H&L has intensified (among others because the new H&L menu is totally mouse driven since version 10.0) the number of new numbers created 'by accident' increased. Therefore we added the following message box prior to the creation of a new number:



Only when you answer Yes will the program assign a new number now.

Amounts shown 'edited' in data entry functions

In data entry and information query functions the recognition of large amounts may be difficult. When for instance the amount of 1523895,73 is shown, it is difficult to see this is about 1½ million.

To solve this we have changed all H&L data entry and information query functions so you can have the amounts 'edited'. This can be arranged through a parameter in which you can define whether you want to use the 'Dutch' lay-out or the lay-out which is customary in (among other countries) the United States. The difference is:



Handel & Logistiek releasenotes v11.0

Salesorder	Table settings	Codings	Ordercosts			
01 ordernumber	00000001	MULLINK ZEILMAKERIJ		0314-598562		
02 debtornr	003406	lines 000016	part.delivery 000010	value euro		1.480,45

Dutch lay-out

Salesorder	Table settings	Codings	Ordercosts			
01 ordernumber	00000001	MULLINK ZEILMAKERIJ		0314-598562		
02 debtornr	003406	lines 000016	part.delivery 000010	value euro		1,480.45

US lay-out

Salesorder	Table settings	Codings	Ordercosts			
01 ordernumber	00000001	MULLINK ZEILMAKERIJ		0314-598562		
02 debtornr	003406	lines 000016	part.delivery 000010	value euro		1480,45

Parameter not filled

Quick search many times more powerful!

In v10.1 we made the quick search 'flexibel', meaning: since then you can define on which items from the master file you want to 'quick search'.

In v11.0 now you can also define that you want to be able to search on items in files, related to the master file. For instance, you can define that you want to quick search on one or more (customer, supplier or product) masterfile extra fields (especially defined for you). You are now also able to quick search on product specifications (which are in fact not part of the item masterfile!), thus creating a much bigger chance of finding the product you are searching for!

Expansion import module

Until this version it was not possible to use an item to be imported, to update a record related to this item. For example, if an import of products also needs to update a price list and the price list number itself is stored in the file to be imported, we could not use this price list number. Now we can!

Multi selection enhancement

Until this version if you pressed the ENTER key during multi selection, the line selected by the blue marker bar was always selected, even if you did not select the line.

This was considered confusing so the method of multi selection is now adjusted so the line selected by the blue marker bar is now only selected if you selected no lines yourself.



Decimal sign in printprogram by the base depending on parameter

Until this version the decimal sign for quantities and amounts was always the comma. This was fine for Dutch installations, but not as nifty for (for example) English installations (where the decimal point is assumed). Therefore in this version you can now define using a parameter %UIBDRFMT\$ whether the 'Dutch' (NL) or 'non Dutch' (ENG) decimal sign should be used.

Logfile tasks performed per user

In this version we added the terminalnumber to the logfile in which per user we register which tasks are started. This can be especially useful if H&L indicates that on terminal Txxx an order is being locked. Now you can see who was working on this terminal that day and has been in the order entry program.

Speeding up presentation import- and report files

The presentation of report files and import files in H&L is managed by a standard function. Until this version this function always showed the complete file. Because import files can be rather large, it sometimes took quite some time before an import file was shown.

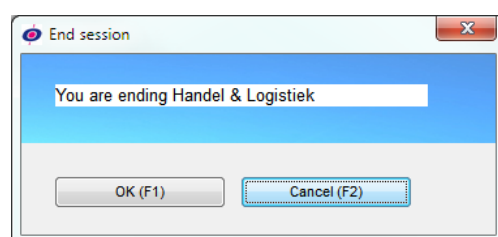
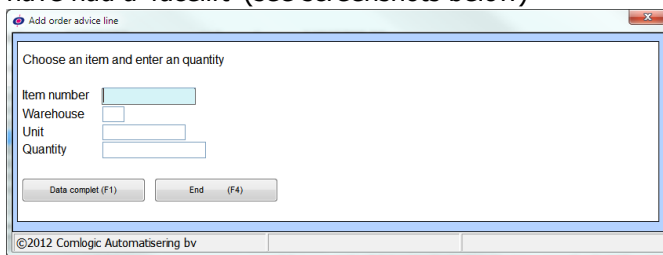
Seen as the main purpose of showing import files is, to be able to check whether we have selected the correct import file, it is not necessary to show the complete import file. For this reason we have created the possibility to only show part of the import file (using a parameter in which we can define that only the first 10, 50, 100, 1000, etc. records need to be shown). This way the import file will be shown directly and you do not have to wait for the presentation anymore.

Preview during printprogram via the base

Comparable to the presentation of an import file in the import module we now added a preview function to this program. Through a parameter you can define if you want to use this preview function and – if so – under which conditions and after how many records. When the preview is shown, the program asks whether the program should proceed.

Question/answer windows adjusted cosmetically

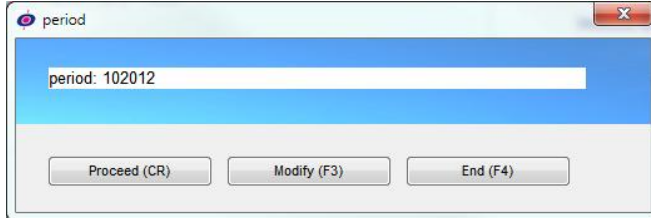
In a lot of functions H&L uses a question/answer window to communicate with you. Those windows have had a 'facelift' (see screenshots below)





Period selection adjusted cosmetically

In all booking functions asking for a period, the presentation is changes as follows:



TABLES

NAC data available per warehouse

To be able to register the correct and complete addresses of all your warehouses, we have added six new items in which you can register the NAC data of your warehouses.

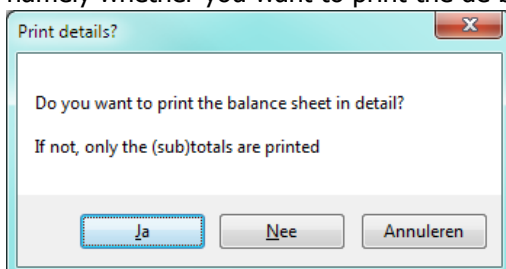
VAT table equipped with 'valid until'

To be able to re-print invoices with old VAT after the VAT percentages have changed, we have added a 'valid until' entry in the VAT table. This way you can define the percentage 'VAT high' until September 30th 2012 in Holland as 19% while in de regular table 21%.

FINANCIAL

Balance print: details and/or subtotals

De balance print functions always printed all details until v10.1, so totals per ledger account number as well as subtotals per section and paragraph (regular balance) or balance code main- and subgroup (balance using balance code). In v11.0 we added an extra option to these balance print functions, namely whether you want to print the de balance in detail or just the subtotals:



If you choose Yes, the balance is printed 'normally'. If you choose No, the totals per ledger account number are not printed, so only the sub- and end totals are printed then.



Report journal postings: including invoice specification

H&L only prints one condensed bookingline for subadministrations debtors and creditors. If desired an alternative report journal postings is available in which – besides the condensed booking – also the specification of all invoices is presented..

General bookings program: fixed journals

H&L already had a function 'permanence bookings' in which you can predefine bookings which have a repetitive nature (for instance every period or every quarter). In v11.0 we added the option 'Fixed journals'.

These are precoded bookpieces that you can book fully automatically on every given moment. Of course you can make last minute changes before booking the journal.

Using a management program you can define in advance which bookings need to be part of the journal. You can choose to only define the ledger account numbers or to also enter the amounts (debit or credit).

acc.nr	description	debit	credit	remark
<input type="checkbox"/> 1730	Reservering vakantiegeld		8205,75	Loonjournaalpost
<input type="checkbox"/> 1760	Netto salarissen		53291,55	Loonjournaalpost
<input type="checkbox"/> 1520	Pensioenheffing		5943,90	Loonjournaalpost
<input type="checkbox"/> 1550	Af te dragen loonheffing		45653,25	Loonjournaalpost
<input type="checkbox"/> 4010	Bruto salarissen	103828,00		Loonjournaalpost
<input type="checkbox"/> 4020	Sociale lasten	8444,50		Loonjournaalpost
<input type="checkbox"/> 4030	Te betalen pensioenpremie	2971,95		Loonjournaalpost
<input type="checkbox"/> 4350	Eigen bijdrage leaseauto		2150,00	Loonjournaalpost

Example management fixed journals

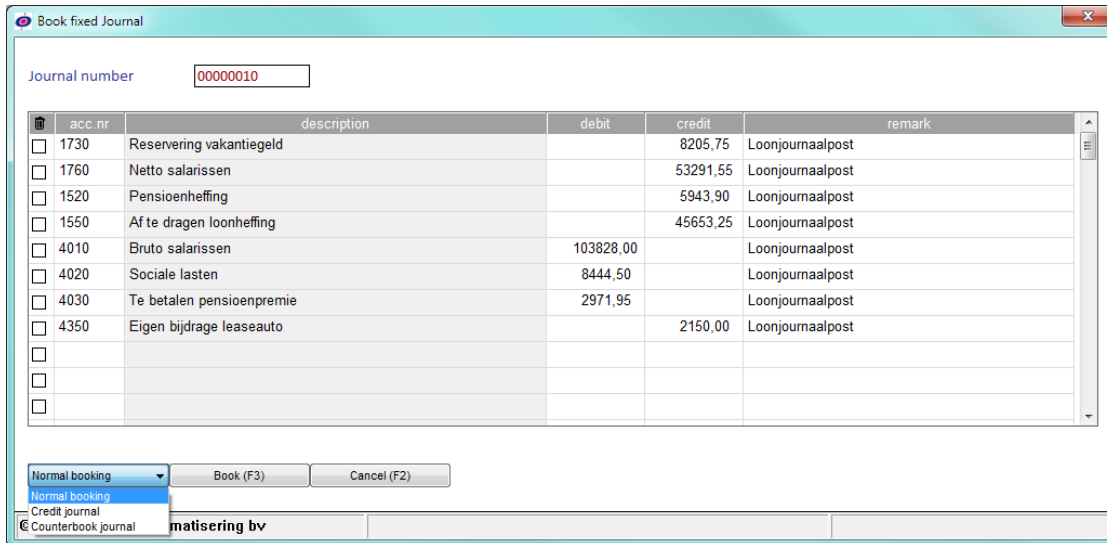
If you add ledger account numbers for which a company account specification is needed, you can also define those in this function. In that case the program will open the following breakdown window.

kostenplaats	kostendrager	bedrag
0050 Autokosten	0001 V. Valdez	200,00-
0050 Autokosten	0002 D. Alvez da Silva	200,00-
0050 Autokosten	0003 G. Pique Bernabeu	200,00-
0050 Autokosten	0004 F. Fabregas Soler	200,00-
0050 Autokosten	0005 C. Puyol Saforcada	200,00-
0050 Autokosten	0006 X. Hernandez Creus	200,00-
0050 Autokosten	0007 D. Villa Sanchez	200,00-
0050 Autokosten	0008 A. Iniesta Lujan	200,00-
0050 Autokosten	0009 A. Alejandro Sanchez	200,00-
0050 Autokosten	0010 L. Andres Messi	1,00-
0050 Autokosten	0011 T. Alcantara	200,00-
0050 Autokosten	0012 S. Busquets	149,00-

Nog boeken: 0,00

Example windowd company account breakdown

In the general bookings program you can select a predefined fixed journal, possibly change the amounts and finally book the journal by simply pressing a button.



Example booking a fixed journal in the general bookings program

As you can see you can choose:

- normal booking
- credit booking (debit amounts credit en vice versa)
- counter book (book debit amounts "positive credit" and credit amounts "negative debit")

General bookings program: company account breakdown

In this function the possibility has been added to delete already added company account breakdown data. This option is presented when you 'double click' on the line you want to delete.

General bookings program: check off function enhanced

Using this recently cosmetically customised 'check off' function you could only select invoices in the listbox by clicking with your mouse on one or more invoices. Only when you pressed the 'select posts' button you could see if the total of selected items corresponded with the amount paid.



Customised 'check off' window

The method in which you can select invoices now is somewhat extended. For instance, the statusbar shows to what extend the selected items correspond with the amount paid directly when you select



one or more invoices. Also an extra option is added with which you can enter one or more invoice numbers. The program will automatically add these invoices to your selection.

Credit control: listbox outstanding invoices adjustable

Modifications in column widths of the 'outstanding invoices' listbox are now saved per user. Also, the chosen sequence is saved. When you want to change the presentation sequence, you can do so and the program automatically changes 'your chosen sequence'.

Credit control: in Manage Debtors, Order- and Quotation entry 'default debtor'

When you called the module 'credit control' within the **Personal Information Menu** (F12), up to this version you always needed to select a customer. Through adjustments in this version, when you have chosen a customer in 'Manage Debtor master data', 'Order entry' or 'Quotation entry', the already selected debtor is filled in the debtor entry. Just pressing the ENTER button will result in selecting this debtor.

Mailing: limitation number of e-mail messages per minute

Using the H&L mailing module you can let H&L create an e-mailing fully automatic. Because this function is able to send a lot of messages very fast, your provider might have reviewed these messages as spam. As a result you ran the risk of being placed on a so called *blacklist*.

To prevent this, you can now specify how many messages per minute may be sent in the mailing definition!

ITEMS

Items: Long item description(s)

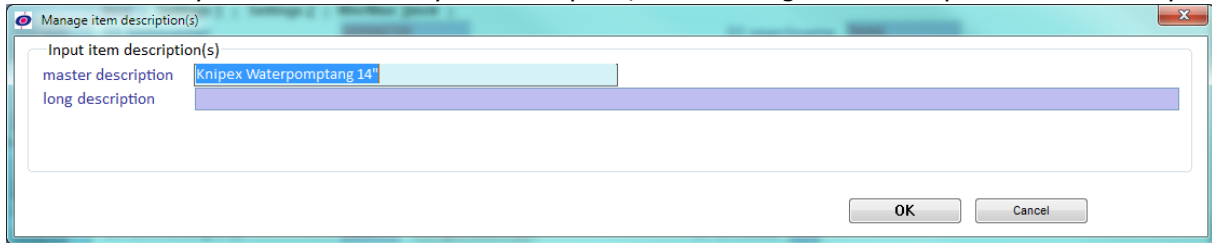
In the item master file you can enter an item description of 30 positions. Also, you can enter a 20 positions long specification (containing, for example, the size or color of the product, etc.).

In some cases we found the space for entering a complete product descriptions to be somewhat limited. For this reason we created the possibility to enter one or more (maximum 3) description lines for an item. This longer description can be besides the 30 position long description already in use but you can also choose to let H&L fill the 30 position long internal description with the (possibly abbreviated) longer description. On all special documents on which the lay-out is adjustable (among others purchase order, order confirmation, invoice, etc.) the longer description will be printed in stead of the regular 30 position long description. If you choose to enter more than one description line, H&L standard will only print the first long description on the documents.

You can choose the length of the description as well as whether or not you want to use the long item description functionality by changing a parameter block. The length of a 'long description' may be up



to 70 positions. If activated, you can change the description using the 'Manage item master file' function. When you choose to modify the description, the following window is opened automatically:



Example long item description(s)

Besides the long description(s) also the standard (internal) item description is shown which is part of the item master file; this description will – as was the case already – be printed on all internal reports and in all data entry and information query screens to identify the item.

Whether the description in the master file is an item to be entered separately by you or whether it must be filled automatically with the (abbreviated?) version of the long description is something you also have to define in the parameter block. In the screen example we have chosen to enter the 30 position description separately.

Attention:

Before you start using this new functionality, it is advisable to check your "special documents" together with a Comlogic software specialist to assess whether the longer descriptions will fit on all of your documents!

Item number 'edited'

On request we have added the possibility to present item numbers more readable in data entry screens. In particular when you use long item numbers it can in fact be rather difficult to recognize the item number.

For this reason we added the option in v11.0 to present your item numbers in data entry screens 'edited'. You can have item number **923586641** presented as:

- 923586641** (unchanged)
 - 923 586 641** (spaces in between)
 - 923.586.641** (dots in between)
 - 9.235.86.641** (dots on different places)
- etc.

Note: the edited option is only available when your item number length is set to 'maximum' (if your item number length for instance is set to 9, the edited length would exceed the maximum length)

Product data per supplier: Screen lay-out managing program enhanced

The managing program with which you can register product data per supplier has been enhanced as far as the screen lay-out is concerned so it is easier to read the data. In stead of a line oriented display, making it possible to present more records in one screen, now only one record is shown.



Product data per customer: Screen lay-out managing program enhanced

The managing program with which you can register product data per customer has been enhanced as far as the screen lay-out is concerned so it is easier to read the data. In stead of a line oriented display, making it possible to present more records in one screen, now only one record is shown.

Lot file: creationdate changed to date BB (Best Before)

The item creation date which for years was 'hidden' in the lot record but was never used, is now renamed to date BB (Best Before). Now for perishable products you can register until when these products may be preserved.

Assemblies: book directly

Until this version there was a separate program to register assembly products connected to a run number. Subsequently you can book this run using a different program.

This method was considered somewhat devious, so in this version we allowed via parameters to directly book assemblies from within the management program. In the parameter settings you can also specify whether the assembly record must be preserved (as is already the case) or if the record may be removed directly after being booked..

PURCHASE

Status in order header shows whether the order is still 'running'

Up to this version it wasn't easy to see which orders were still 'running'. In this version we have changed the software in such a way that the status code in the order header now always shows whether the order is still running or completed; if the order is completed, the status code in the order header will be changed to value 9.

Because we have also attached a sort to this status code, we can now quickly check which orders are still running!

'Order occupied' message including user

If an order is occupied by another user on another terminal, H&L always reported on which terminal the order was locked. In this version we added the user name who locked the order.



Establishment warehouse functionality like in sales

When you entered an establishment warehouse in the user table, H&L fills this warehouse in the sales order line in stead of the warehouse it would normally choose. This functionality is now also added in the purchase order entry.

Purchase per 'Statistical number'

See the description under 'Sales'.

Creating memo text lines per product

In the sales order entry program it was already possible to automatically add memo text lines related to a product in the order. This functionality now has been added to the purchase order entry function.

Delivery address in purchase orders

As already provided in sales order entry now the registration of a delivery address has also been added to the purchase order entry function. If filled, this address can be printed on the purchase order document (like it was already possible for direct delivery orders).

SALES

'Order occupied' message including user

If an order is occupied by another user on another terminal, H&L always reported on which terminal the order was locked. In this version we added the user name who locked the order

Purchase price at purchase on sales / direct deliveries on 0?

Till v10.1 it was not allowed to enter zero as a purchase price for purchase on sale or direct delivery order lines. In v11.0 the price is now allowed to be zero depending on a parameter. For some customers it was necessary to be able to enter 0,00 because they sell some products for free.

Change delivery date for the order because of a different orderline delivery date

Till now H&L offered the opportunity to change all delivery dates in the order based on the delivery date of a certain order line (if the delivery date of the order line was later then the delivery date in the order header). Now – using a new parameter – it is also possible to use this option if the delivery date for an order line is earlier then the delivery date in the order header..



Deliverydate also for ledger account lines

In preparation of project administration functionality within H&L, the item delivery date – which until now could only be entered for product lines – can now also be entered for ledger account lines.

Serial number entry mandatory

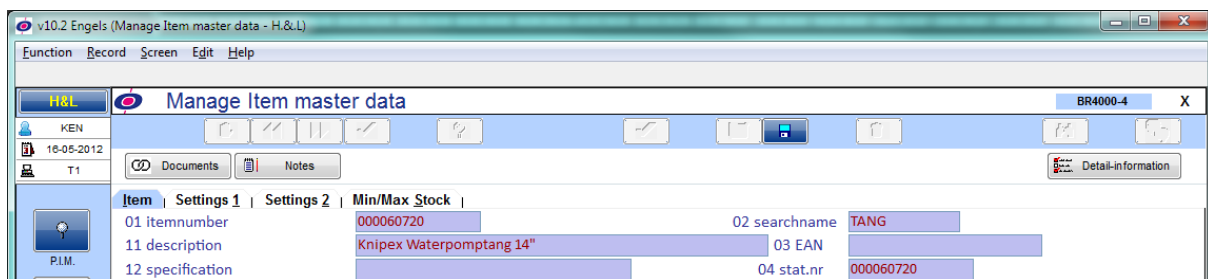
If you coded an item as 'mandatory entry of serial number at feedback orders', H&L always checked if the serial number entered did exist. That is: if there was a serial number in the system for that item at all. If not, each serial number was considered correct. In this version we have blocked this opportunity: 'mandatory' now means that you always have to enter an existing serial number before an order line will be accepted in the feedback function.

Turnover per 'Statistical number'

Some of our customers using H&L have different item numbers in their product database which are all describing the same product, for example, products in different colors or different units. In these cases it is difficult to determine what the Total turnover of such a product is, after all: the turnover is spread over various item numbers of which the turnover should be added.

Besides, if items are defined in different units, you can't add the amounts either. If of a product we have sold 7 boxes of 12 pieces and also 5 separate pieces, the turnover is not 12 (7+5) but 89 (7x12 + 5).

By adding a statistical number (meaning: new item number) in the item master file to one or more existing item numbers and as a result selecting this statistical number in an online or management statistic in stead of item number, H&L can now add the turnover in quantities and values so you can see the total turnover of one product.



Example item master file including the new item 'statistical number'

This functionality is also provided in the customer master file and the customer shipping address file. This way you can also connect different customer numbers or delivery addresses by using the same statistical number (meaning: new debtor number).

If you then define an online or management statistic and you select the statistical number in stead of the customer number, you can let H&L add all turnover on different debtor numbers all having the same statistical number.



Remove sublines automatically when you remove a main line

Until this version you always needed to delete all sublines before you could delete a salesorder main line. That sometimes meant you had to press the F2 (delete) button frequently, especially when there were a lot of sublines defined. Therefore, in this version we changed the program so it can (controlled by a parameter) automatically remove all sublines when you decide you want to remove a main line from a sales order.

STATISTICS (purchase & sales)

Online statistics also on 'extra fields'

In this version we have added the option to also be able to make extra fields (for purchase: creditors and items and for sales: debtors and items) a part of an online statistic. This way you also can use your company specific data (stored in the in de 'extra fields') statistically!



Handel & Logistiek releasenotes v11.0

MODIFIED OR NEW PARAMETERS

tp	naam	omschrijving	positie	Betekenis
0	ARTOMS	Lange artikelomschrijving op documenten	(1,1)	Tot deze versie was de stamblad artikel omschrijving van 30 posities de enige artikelomschrijving. Er bleek behoefte aan meer dus is deze parameter toegevoegd waarmee - indien geactiveerd - langere omschrijving(en) bewaard worden in bestand SBLAO0. Op externe documenten (orderbevestiging, Inkoop-opdracht, factuur etc.) wordt de lange omschrijving getoond. 0=geen lange omschrijving(en) (op de oude manier) 1=lange omschrijving(en) actief
0	ARTOMS	Lange artikelomschrijving op documenten	(2,2)	In deze posities noteert u hoe lang de omschrijving maximaal mag zijn let op: Dit aantal mag maximaal 70 zijn!
0	ARTOMS	Lange artikelomschrijving op documenten	(4,1)	In deze positie noteert u hoeveel omschrijvingregels u mag invoeren let op: Dit aantal mag maximaal 3 zijn!
0	ARTOMS	Lange artikelomschrijving op documenten	(5,1)	In deze positie noteert u hoe de 30 positie lange omschrijving in het stamblad (bedoeld voor intern gebruik) gevuld dient te worden: 0=de omschrijving wordt automatisch gevuld via de (eerste) lange omschrijving (eventueel afgekapt) 1=u dient de stam omschrijving apart in te voeren
0	BESTMETH	Bestelmethode module	(61, 1)	Wanneer mag de 'backup minimum voorraad' worden toegepast? Default wordt de backup minimum voorraad altijd overgenomen als de min.voorraad nul is. Afhankelijk van uw instelling wordt deze optie beperkt: 0=altijd 1=de backup minimum voorraad wordt alleen gehanteerd als max.streefvoorraad>=1
0	SNELZOEKxxxx	Snelzoek instellingen	(1,...)	In deze parameter (waarvan de indeling voor SNELZOEK1011 t/m SNELZOEK4014 identiek is) kunt u vastleggen op welke rubrieken uit het stambestand u via de snelzoek wilt kunnen zoeken. Voor deze rubrieken kunt u volstaan met het volgende invoerformaat: pppll -de positie en lengte aanduiding van de rubriek Daarnaast is het mogelijk om rubrieken in de snelzoek op te nemen die niet in het stambestand staan maar waarvan de sleutel wel in het stambestand staat. Denk daarbij bijvoorbeeld aan: - de omschrijving van een balans hoofdgroep (grootboek) - valuta afkorting (debiteur en crediteur) - de omschrijving van een artikelgroep (artikelen) Het invoerformaat van deze rubrieken is complexer dan voor 'gewone' rubrieken': SBxxxx -data dictionary waaruit de rubriek moet worden gehaald aa -lengte van een 'literal' die vooraf gaat aan de variabele key (deze kan de waarde 00 t/m 99 bevatten) bb -lengte van een 'literal' die volgt op de variabele key (deze kan de waarde 00 t/m 99 bevatten) c -'literal' die vooraf gaat aan de variabele key (niet als aa 00 is) d -'literal' die volgt op de variabele key (niet als dd 00 is) eeeff -positie van het key-element in het stambestand pppll -positie en lengte aanduiding van de rubriek in het gerelateerde record LET OP: Als u rubrieken toevoegt die niet in het stambestand staan, kan door wijziging van deze rubrieken in de betreffende tabel heropbouw van de snelzoek noodzakelijk zijn!



Handel & Logistiek releasenotes v11.0

0	VERKOOP	Aanpassen leverdata n.a.v. leverdatum (orderkop) overschrijding	(76,1)	<p>Bij een orderregel leverdatum die verder ligt dan de leverdatum in de orderkop kan de (QKSAMD) vraag volgen of de hele order (alle regels en de kop) deze leverdatum moet krijgen</p> <p>0=nvt 1=vraagstelling aanpassen leverdata voor hele order</p> <p>Nieuwe optie in versie 11.0 Indien u deze vraagstelling wenst als de regel leverdatum afwijkt van de leverdatum in de orderkop, dan kunt u dat bereiken door de parameter met de volgende waarde te vullen: 2= vraagstelling aanpassen leverdata voor hele order als een regel leverdatum afwijkt van de leverdatum in de orderkop</p>
0	VERKOOP	Mag Inkooprij IOV/DIRLEV nul zijn?	(168,1)	<p>Via deze parameter positie kunt u aangeven of u bij in- op verkopen en directe leveringen in Order invoer als inkooprij de waarde 0,00 mag invoeren.</p> <p>0=nee 1=ja</p>

tp	naam	omschrijving	positie	Betekenis
0	VERKOOP	Hoofdregel met subregels mogen verwijderen?	(169,1)	<p>Via deze parameter positie kunt u aangeven of u wilt toestaan dan een hoofd orderregel (verkoop) mag worden verwijderd als er nog subregels onder hangen en of dan gelijk de subregels mogen worden verwijderd:</p> <p>0=nee 1=ja</p>
1	QK1202	Boekingsprogramma grafisch	(101,100)	<p>Deze posities zijn gereserveerd om twee tekstregels van 50 posities in vast te leggen die dan in de kop van het boekstuk wordt getoond. Daarin kan bijvoorbeeld worden vastgelegd welke tussenrekeningen voor welke doeleinden dienen te worden gebruikt.</p>
1	QK4530	Automatisch boeken samenstellingen	(1,1)	<p>Ja deze parameter kunt u bepalen of direct na invoer van een samenstelling de boeking dient plaats te vinden. De volgende opties zijn voorhanden:</p> <p>0 = Nee 1 = Ja (met vraagstelling) 2 = Ja (automatisch)</p>
1	QK702F	Serienummer terugmelding	(1,1)	<p>Naast de reeds aanwezige serienummer invoerfunctie kunt u via deze parameter positie aangeven of u een alternatieve invoerprocedure wenst. In deze procedure wordt niet gecontroleerd op bestaan van het serienummer in de tabel serienummers per artikel.</p> <p>0 = reguliere invoer 1 = invoer via QKSAMD vensters zonder controle op bestaan serienummer</p>
1	QK702F	Serienummer terugmelding	(2,1)	<p>Normaliter wordt voor artikelen met serienummer registratie type 2 (verplicht) gecontroleerd op bestaan van het serienummer (de serienummers moeten dan al op moment van ontvangst in H&L te worden vastgelegd). Sommige klanten wilden deze controle echter niet. Via deze parameter kunt u daarom aangeven of die standaard controle uitgezet dient te worden:</p> <p>0 = reguliere controle 1 = geen controle op bestaan van het serienummer</p>
1	QK9SZK	Snelzoek (her)opbouw	(1, ...)	<p>Hier kunt u vastleggen voor welke bestanden de snelzoek moet worden bijgewerkt wanneer programma QK9SZK wordt gedraaid</p> <p>Voorbeeld: SB1011SB2012SB3013SB4014 Hiermee wordt de snelzoek index van alle stambestanden opgebouwd</p>
1	QKSRAP	Info functie inhoud ascii file	(1, 5)	<p>Aantal records van een ASCII file dat maximaal wordt getoond in een multiline: Indien nul of 'leeg' dan worden maximaal 1000 records getoond Note: zet het aantal niet te hoog anders duurt het te lang voor de infofunctie iets toont!</p>
1	QKUPRT	Printen via de base	(1, 1)	<p>Hier kunt u aangeven of u wilt werken met de preview optie:</p> <p>0=nee 1=vraagstelling 2=altijd</p>
1	QKUPRT	Printen via de base	(2, 5)	<p>Indien u gebruik maakt van de preview functie kunt u hier aangeven na hoeveel records (waarin al dan niet iets is gevonden) er een tussenvraag dient te komen.</p> <p>Voorbeeld: 02000 betekent dat een tussenmelding volgt na 2000 gelezen records</p>



Handel & Logistiek releasenotes v11.0

1	QKUPRT	Printen via de base	(7, 5)	Indien u een verslag naar een printer of naar de pvx viewer stuurt werd altijd na 130 posities de printregel afgebroken om op de volgende regel verder te gaan. Die waarde kunt u nu veranderen of via deze parameter op een vaste (andere) waarde zetten: 00000 (of spaties) betekent dat 130 posities breedte wordt gehanteerd (oude situatie) 99999 betekent dat er niet wordt afgekapt Elke andere waarde wordt default getoond en kunt u bij opstart wijzigen
---	--------	---------------------	---------	---